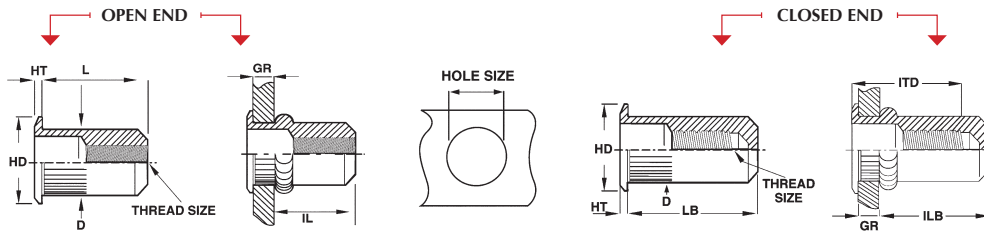


# CAL LARGE FLANGE KNURLED BODY THIN WALL SERIES



## CAL SERIES



### UNIFIED THREAD (UNIT - INCHES)

Part Number (Steel)	Thread Size	Grip Range		L ± .015	HD ±.010 ±.025*	HT ± .003	D Max.	IL Max.	LB ± .015	ILB Max.	ITD Ref.	Hole Size +.006/-.000
		Min.	Max.									
CAL2-0632-080	6-32 UNC	.020	.080	.420	.390	.030	.265	.305	.740	.640	.610	.266
CAL2-0632-130	6-32 UNC	.080	.130	.470	.390	.030	.265	.305	.740	.580	.670	.266
CAL2-0832-080	8-32 UNC	.020	.080	.420	.390	.030	.265	.305	.740	.640	.610	.266
CAL2-0832-130	8-32 UNC	.080	.130	.470	.390	.030	.265	.305	.740	.580	.670	.266
CAL2-1024-130	10-24 UNC	.020	.130	.475	.415	.030	.296	.315	.990	.845	.730	.297
CAL2-1024-225	10-24 UNC	.130	.225	.585	.415	.030	.296	.315	.990	.735	.840	.297
CAL2-1032-130	10-32 UNF	.020	.130	.475	.415	.030	.296	.315	.990	.845	.730	.297
CAL2-1032-225	10-32 UNF	.130	.225	.585	.415	.030	.296	.315	.990	.735	.840	.297
CAL2-2520-165	1/4-20 UNC	.027	.165	.580	.500	.030	.390	.380	1.190	1.005	.895	.391
CAL2-2520-260	1/4-20 UNC	.165	.260	.680	.500	.030	.390	.380	1.190	.905	1.035	.391
CAL2-2528-165	1/4-28 UNF	.027	.165	.580	.500	.030	.390	.380	1.190	1.005	.895	.391
CAL2-2528-260	1/4-28 UNF	.165	.260	.680	.500	.030	.390	.380	1.190	.905	1.035	.391
CAL2-3118-150	5/16-18 UNC	.027	.150	.690	.685*	.035	.530	.470	1.390	1.175	.995	.531
CAL2-3118-312	5/16-18 UNC	.150	.312	.805	.685*	.035	.530	.425	1.390	1.025	1.120	.531
CAL2-3124-150	5/16-24 UNF	.027	.150	.690	.685*	.035	.530	.470	1.390	1.175	.995	.531
CAL2-3124-312	5/16-24 UNF	.150	.312	.805	.685*	.035	.530	.425	1.390	1.025	1.120	.531
CAL2-3716-150	3/8-16 UNC	.027	.150	.690	.685*	.035	.530	.470	1.390	1.175	.995	.531
CAL2-3716-312	3/8-16 UNC	.150	.312	.805	.685*	.035	.530	.425	1.390	1.025	1.120	.531
CAL2-3724-150	3/8-24 UNF	.027	.150	.690	.685*	.035	.530	.470	1.390	1.175	.995	.531
CAL2-3724-312	3/8-24 UNF	.150	.312	.805	.685*	.035	.530	.425	1.390	1.025	1.120	.531
CAL2-5013-200	1/2-13 UNC	.063	.200	1.150	.865*	.047	.685	.850	2.365	2.070	1.505	.688
CAL2-5013-350	1/2-13 UNC	.200	.350	1.300	.865*	.047	.685	.850	2.365	1.920	1.505	.688

- The CAL series has a large flange to provide increased strength in punched and drilled holes.
- Knurled body provides a higher resistance to spin out when installed in soft materials.
- Inch body
- Inch and metric threads

### METRIC THREAD (UNIT - MILLIMETERS)

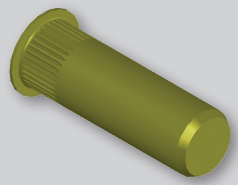
Part Number (Steel)	Thread Size	Grip Range		L ± .38	HD ±.25 ±.64*	HT ± .08	D Max.	IL Max.	LB ± .38	ILB Max.	ITD Ref.	Hole Size +.15/- .000
		Min.	Max.									
CAL2-470-2.0	M4x0.7 ISO	0.50	2.00	10.68	9.91	0.76	6.73	7.75	18.80	16.26	15.49	6.75
CAL2-470-3.3	M4x0.7 ISO	2.00	3.30	11.94	9.91	0.76	6.73	7.75	18.80	14.73	17.02	6.75
CAL2-580-3.3	M5x0.8 ISO	0.50	3.30	12.07	10.54	0.76	7.52	8.00	25.15	21.46	18.54	7.60
CAL2-580-5.7	M5x0.8 ISO	3.30	5.70	14.86	10.54	0.76	7.52	8.00	25.15	18.67	21.34	7.60
CAL2-610-4.2	M6x1.0 ISO	0.70	4.20	14.73	12.70	0.76	9.91	9.65	30.23	25.53	22.73	10.00
CAL2-610-6.6	M6x1.0 ISO	4.20	6.60	17.27	12.70	0.76	9.91	9.65	30.23	22.99	26.29	10.00
CAL2-8125-3.8	M8x1.25 ISO	0.70	3.80	17.53	17.40*	0.89	13.46	11.94	35.31	29.85	25.27	13.50
CAL2-8125-7.9	M8x1.25 ISO	3.80	7.90	20.45	17.40*	0.89	13.46	10.80	35.31	26.04	28.45	13.50
CAL2-1015-3.8	M10x1.5 ISO	0.70	3.80	17.53	17.40*	0.89	13.46	11.94	35.31	29.85	25.27	13.50
CAL2-1015-7.9	M10x1.5 ISO	3.80	7.90	20.45	17.40*	0.89	13.46	10.80	35.31	26.04	28.45	13.50
CAL2-12175-5.1	M12x1.75 ISO	1.60	5.10	29.21	21.97*	1.19	17.40	21.59	60.07	52.58	38.23	17.45
CAL2-12175-8.9	M12x1.75 ISO	5.10	8.90	33.02	21.97*	1.19	17.40	21.59	60.07	48.77	38.23	17.45

◆ Non-Standard Part: Minimum order quantity required after depletion of stock. Please contact Sherex for current availability.

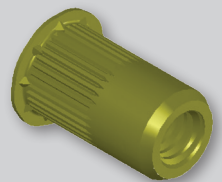
### PART NUMBERING SYSTEM

<b>CAL Specifications</b>	<b>Part Number</b>	Example: CAL2-2520-165				
<b>Material:</b>						
Steel 1008/1010	CAL	2	2520	165	( )	
Stainless Steel 302*	Product Style	Material	Thread Size	Grip Range	Empty-Open End	
Aluminum 5056	Large Flange	1-Stainless Steel			B-Closed End	
<b>RoHS Compliant Finishes:</b>	Knurled Body	2-Steel			T-Clear Trivalent	
Zinc Plated-Yellow Trivalent Chromate per Sherex SFS-01-001, SC2	Thin Wall Series	3-Aluminum			W-Wedge Head	
Zinc Plated-Clear Trivalent Chromate per Sherex SFS-01-001					S-Sealed	

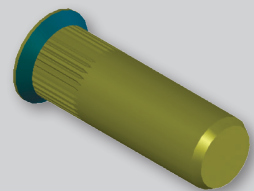
*Special finish or material available upon request*



CLOSED END



WEDGE HEAD



SEALED HEAD

\*Contact Sherex for exact product dimensions in Stainless Steel.

Grip range can be affected by parent material and hole size. Sherex recommends trial installations to determine the proper grip range for the application.

Contact Sherex for details.

CAL style rivet nuts are available in sealed, closed end, and wedge head designs by special order. Other specials available upon request.

Contact Sherex for test data.

#### INSTALLATION TOOLING

CAL Series can be installed with our Hand Tools, Pneumatic Tools, and Hydro-Pneumatic Tools.

For additional tooling information see pages 39-44.

Sherex rivet nuts are compatible with the following hardware:

**GRADE 2, GRADE 5, CLASS 8.8 and CLASS 9.8**

Please contact Sherex when using other grade fasteners.